

## Royal Preston Hospital Emergency Department

### Monthly Bulletin: July 2009 to June 2010

This bulletin provides a breakdown of all injury attendances at Royal Preston Hospital Emergency Department (ED) between July 2009 and June 2010.

Between July 2009 and June 2010 there were 31,450 attendances to Royal Preston Hospital ED. The month with the highest attendance was April with 2,900 attendances (**Figure 1**). There were more male than female attendances presenting at Royal Preston Hospital ED (males=17,538; 56%).

**Figure 2** illustrates age group of ED attendances for each month. The majority of ED attendances were aged 15-29 (n=9,577; 30%) and 30% were 30-59 years old (n=9,414).

**Table 1** details the injury group of ED attendances. For over a third (38%) of attendances, injury group was recorded as Falls. Other injury accounted for 36% of attendances, road traffic collisions (RTC) 10%, sports injury 9% and assaults 5%.

**Table 2** illustrates the location of incident for patients attending the Royal Preston Hospital ED. The primary locations of injury were public place and home where three in ten (30%) of attendances occurred. This was followed by other location (10%). The discharge destination for injury attendances is displayed in **Table 3**. It indicates that over half (55%) of attendances were discharged with no follow-up

treatment. Just over one in ten (11%) attendances went to the fracture clinic or were discharged into the care of their GP.

#### Assault attendances

Between July 2009 and June 2010 there were 1,710 assault attendances to Royal Preston Hospital ED. The month with the highest attendance was April with 168 attendances (**Figure 3**). There were more male than female assault attendances presenting at Royal Preston Hospital ED (males=1,238; 72%).

**Table 4** details the age group of assault attendances for each month. The majority of ED assault attendances were aged 15-29, (n=1,025; 60%) and a third (33%) were aged 30-59 (n=566).

**Table 5** illustrates the incident location for assault attendances to Royal Preston Hospital ED. The primary incident locations for assault attendances were in a public place (62%), followed by home (15%) and other (10%).

The discharge destination for assault attendances is displayed in **Table 6**. It indicates that less than half (46%) of assault attendances were discharged with no follow-up treatment. Over a quarter (26%) of attendances required follow-up treatment and 14% of assault attendees were admitted to hospital.

Figure 1: Gender of ED injury attendances by month, July 2009 to June 2010

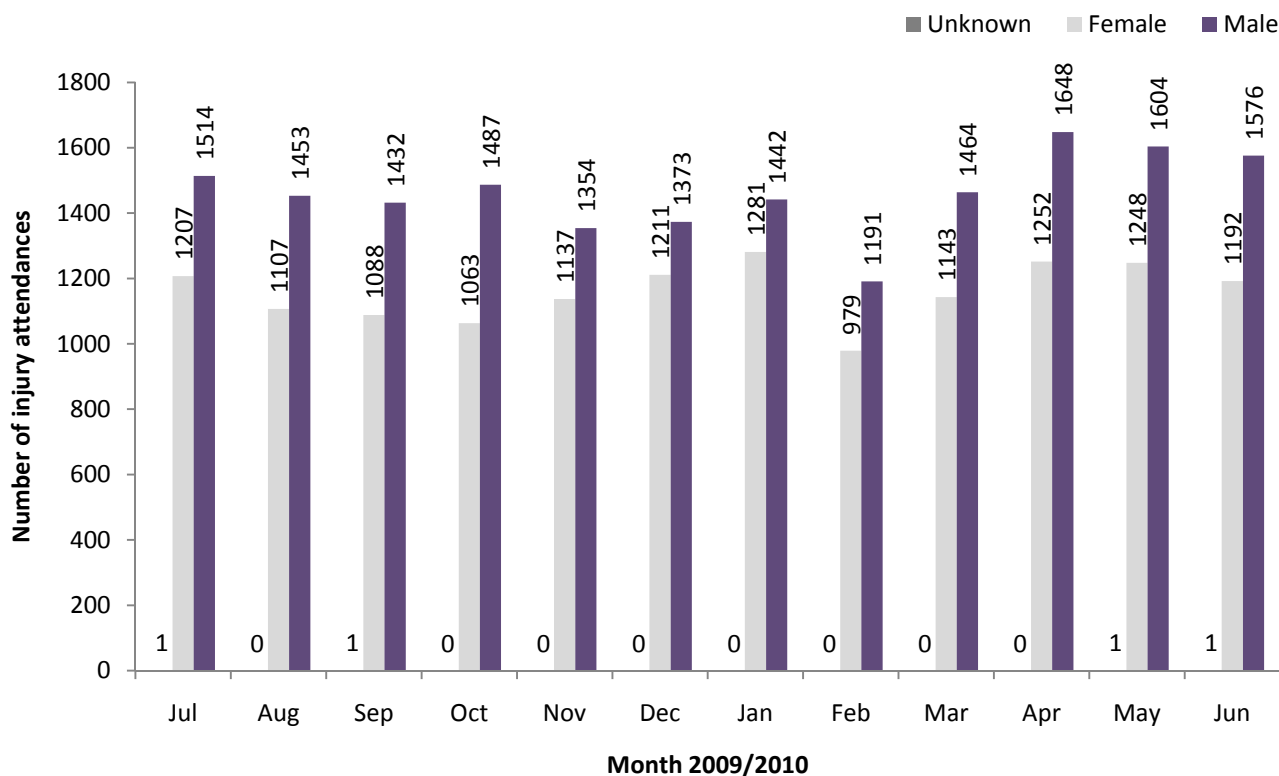


Figure 2: Percentage of ED injury attendances by age group and month, July 2009 to June 2010

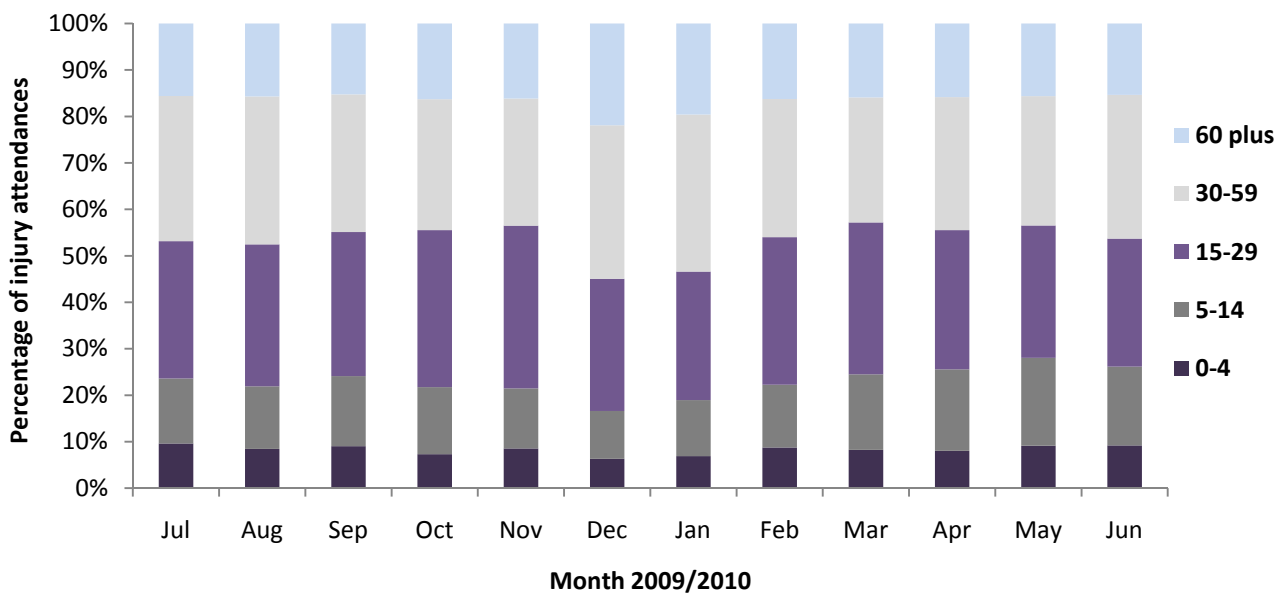


Table 1: ED injury attendances by injury group and month, July 2009 to June 2010<sup>1</sup>

Injury group	Jul	Aug	Sep	Oct	Nov	Dec	Jan	Feb	Mar	Apr	May	Jun	Total	%
Fall	938	861	889	860	883	1249	1447	790	961	1028	1107	991	12004	38
Other injury	1091	1071	946	889	924	794	742	751	934	1130	1057	1124	11453	36
RTC	281	275	278	342	315	271	250	268	211	245	233	260	3229	10
Sports injury	237	190	247	294	220	128	152	228	350	311	276	229	2862	9
Assault	152	147	145	155	136	127	121	120	138	168	157	144	1710	5
Deliberate self-harm	23	16	16	10	13	15	11	13	13	18	23	21	155	0
<b>Total</b>	<b>2722</b>	<b>2560</b>	<b>2521</b>	<b>2550</b>	<b>2491</b>	<b>2584</b>	<b>2723</b>	<b>2170</b>	<b>2607</b>	<b>2900</b>	<b>2853</b>	<b>2769</b>	<b>31450</b>	<b>100</b>

<sup>1</sup> Please note percentages might not add to one hundred due to rounding.

**Table 2: ED injury attendances by incident location and month, July 2009 to June 2010<sup>23</sup>**

Location	Jul	Aug	Sep	Oct	Nov	Dec	Jan	Feb	Mar	Apr	May	Jun	Total	%
Public place	733	748	722	842	727	969	1028	662	623	775	860	784	9473	30
Home	796	793	750	711	823	787	731	651	782	852	839	817	9332	30
Other	355	298	253	187	166	248	344	196	279	307	221	268	3122	10
Work	239	226	240	214	249	196	222	192	211	218	224	233	2664	8
Sport	207	186	222	279	204	126	124	210	287	294	240	212	2591	8
Educational establishment	111	***	137	173	190	121	133	120	236	147	170	129	1671	5
Home other persons	76	94	58	37	33	68	64	56	62	81	65	93	787	3
Garden	65	58	38	24	20	10	9	12	24	114	86	105	565	2
Holiday	39	49	35	37	10	13	17	25	18	29	27	39	338	1
Public park/playground	24	36	21	9	***	6	10	8	16	38	49	37	258	1
Public building	35	20	16	14	23	13	13	16	15	14	22	10	211	1
Nursery	20	18	15	***	18	8	12	5	30	13	21	20	184	1
Hospital	8	8	6	***	12	6	5	6	9	6	16	11	96	0
HMP	9	8	5	6	5	7	***	5	9	6	6	5	74	0
Special event	***	10	***	7	6	***	***	***	***	***	***	6	49	0
Public transport	***	***	***	***	***	***	***	***	***	5	***	***	19	0
Bus station	***	***	***	***	***	***	***	***	***	***	***	***	16	0
<b>Total</b>	<b>2722</b>	<b>2560</b>	<b>2521</b>	<b>2550</b>	<b>2491</b>	<b>2584</b>	<b>2723</b>	<b>2170</b>	<b>2607</b>	<b>2900</b>	<b>2853</b>	<b>2769</b>	<b>31450</b>	<b>100</b>

**Table 3: ED injury attendances by discharge destination and month, July 2009 to June 2010<sup>4</sup>**

Discharge destination	Jul	Aug	Sep	Oct	Nov	Dec	Jan	Feb	Mar	Apr	May	Jun	Total	%
Discharged - no follow-up	1590	1487	1458	1419	1385	1401	1431	1207	1429	1568	1530	1445	17350	55
Discharged - follow-up by GP	231	270	224	310	285	229	321	238	290	351	377	388	3514	11
Fracture clinic	273	263	263	234	240	349	350	226	298	346	335	333	3510	11
Admitted RPH	274	226	250	265	275	320	305	229	248	274	260	243	3169	10
Left before being treated	115	103	115	104	92	63	103	65	93	96	88	94	1131	4
ED clinic	98	95	92	86	79	79	91	80	96	103	93	90	1082	3
Outpatient clinic	47	31	45	53	53	50	31	36	65	60	56	48	575	2
Other healthcare professional	43	35	41	42	41	52	49	42	49	51	61	46	552	2
Other	34	33	18	21	27	18	27	32	31	41	39	68	389	1
Left having refused treatment	5	9	6	8	8	10	10	9	***	6	5	7	85	0
Police custody	***	5	6	6	***	7	***	***	***	***	***	***	45	0
Transferred to other HCP	7	***	***	***	***	***	***	***	***	***	5	6	42	0
Admitted CDGH	***	***	***	***	***	***	***	***	***	***	***	***	6	0
<b>Total</b>	<b>2722</b>	<b>2560</b>	<b>2521</b>	<b>2550</b>	<b>2491</b>	<b>2584</b>	<b>2723</b>	<b>2170</b>	<b>2607</b>	<b>2900</b>	<b>2853</b>	<b>2769</b>	<b>31450</b>	<b>100</b>

## Assaults

**Table 4: ED assault attendances by age group and month, July 2009 to June 2010**

Age group	Jul	Aug	Sep	Oct	Nov	Dec	Jan	Feb	Mar	Apr	May	Jun	Total	%
Unknown	***	***	***	***	***	***	***	***	***	***	***	***	***	0
0-4	***	***	***	***	***	***	***	***	***	***	***	***	***	0
5-14	8	***	9	***	7	***	***	6	12	10	8	11	83	5
15-29	94	90	84	101	91	66	66	73	91	90	94	85	1025	60
30-59	46	52	49	46	34	56	50	40	31	65	53	44	566	33
60 plus	***	***	***	***	***	***	***	***	***	***	***	***	33	2
<b>Total</b>	<b>152</b>	<b>147</b>	<b>145</b>	<b>155</b>	<b>136</b>	<b>127</b>	<b>121</b>	<b>120</b>	<b>138</b>	<b>168</b>	<b>157</b>	<b>144</b>	<b>1710</b>	<b>100</b>

<sup>2</sup> Educational establishment includes: educational establishment; school other; school; school playground; and, school sport. 'Public place' includes public place and playing out.

<sup>3</sup> Please note that all numbers less than five have been suppressed (with \*\*\*) in line with patient confidentiality and if there is only one number less than five in a category then two numbers will be suppressed to prevent back calculations from totals.

<sup>4</sup> 'Admitted to CDGH' includes: admitted; admitted to Chorley and South Ribble Hospital (CDGH); admitted to Healey/Yarrow Ward. 'Admitted to RPH' includes: admitted to Royal Preston Hospital (RPH); and, admitted to the Avondale Unit. 'Other' includes: primary care; other; dead on arrival; sea and waterway; and, died in department. HCP=Health care provider, OP=out-patient and GP=general practitioner.

Figure 3: Number of ED assault attendances by gender and month, July 2009 to June 2010

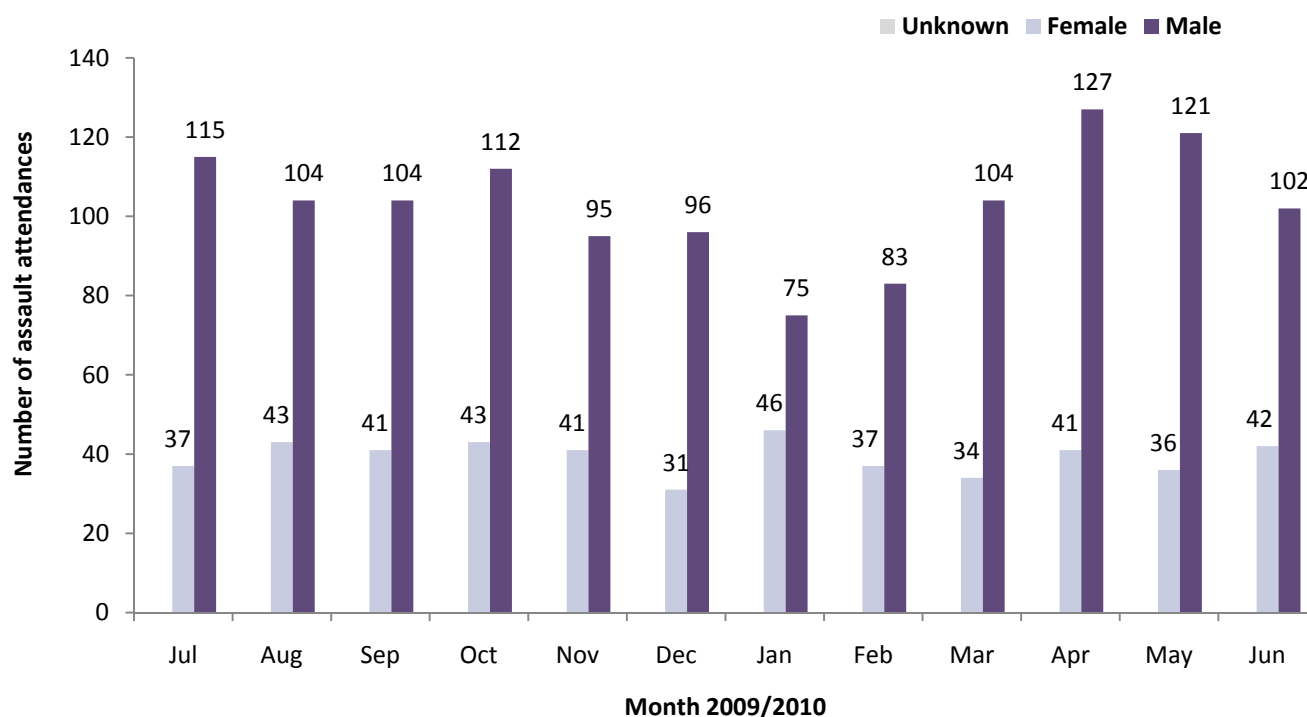


Table 5: ED assault attendances by incident location and month, July 2009 to June 2010<sup>5</sup>

Location	Jul	Aug	Sep	Oct	Nov	Dec	Jan	Feb	Mar	Apr	May	Jun	Total	%
Public place	86	79	92	121	78	79	78	76	81	107	101	87	1065	62
Home	21	22	27	16	21	23	20	15	20	26	26	18	255	15
Other	22	23	14	11	18	9	6	11	14	16	9	15	168	10
Work	5	7	***	***	8	***	***	6	***	11	***	7	63	4
Home other	***	8	***	***	***	8	5	***	7	***	***	9	53	3
Educational establishment	***	***	***	***	5	***	***	***	7	***	5	5	40	2
Public building	6	***	***	***	***	***	***	***	***	***	6	***	24	1
Prison	***	***	***	***	***	***	***	***	***	***	***	***	12	1
Public park/playground	***	***	***	***	***	***	***	***	***	***	***	***	11	1
Holiday	***	***	***	***	***	***	***	***	***	***	***	***	5	0
Hospital	***	***	***	***	***	***	***	***	***	***	***	***	5	0
Sport	***	***	***	***	***	***	***	***	***	***	***	***	5	0
Bus station	***	***	***	***	***	***	***	***	***	***	***	***	***	0
Garden	***	***	***	***	***	***	***	***	***	***	***	***	***	0
Nursery	***	***	***	***	***	***	***	***	***	***	***	***	***	0
Special event	***	***	***	***	***	***	***	***	***	***	***	***	***	0
<b>Total</b>	<b>152</b>	<b>147</b>	<b>145</b>	<b>155</b>	<b>136</b>	<b>127</b>	<b>121</b>	<b>120</b>	<b>138</b>	<b>168</b>	<b>157</b>	<b>144</b>	<b>1710</b>	<b>100</b>

Table 6: ED assault attendances by discharge destination and month, July 2009 to June 2010

Discharge destination	Jul	Aug	Sep	Oct	Nov	Dec	Jan	Feb	Mar	Apr	May	Jun	Total	%
Discharged	76	82	74	62	66	58	54	51	58	78	68	62	789	46
Follow-up	40	26	28	41	35	30	35	36	44	53	44	39	451	26
Admitted	19	16	20	22	19	23	17	21	22	23	24	21	247	14
Other	17	23	23	30	16	16	15	12	14	14	21	22	223	13
<b>Total</b>	<b>152</b>	<b>147</b>	<b>145</b>	<b>155</b>	<b>136</b>	<b>127</b>	<b>121</b>	<b>120</b>	<b>138</b>	<b>168</b>	<b>157</b>	<b>144</b>	<b>1710</b>	<b>100</b>

Published September 2010

Johnathan Rooney (Lancashire TIIG Officer)

Centre for Public Health, Liverpool John Moores University, 3<sup>rd</sup> Floor, Henry Cotton Campus, Liverpool, L3 2ET

Tel: 0151 231 4513 Email: [j.rooney@ljmu.ac.uk](mailto:j.rooney@ljmu.ac.uk)

Website: [www.tiig.info](http://www.tiig.info) (please note data requests should be made through the website)

<sup>5</sup> Educational establishment includes: educational establishment; school other; school; school playground; and, school sport. 'Public place' includes public place and playing out.